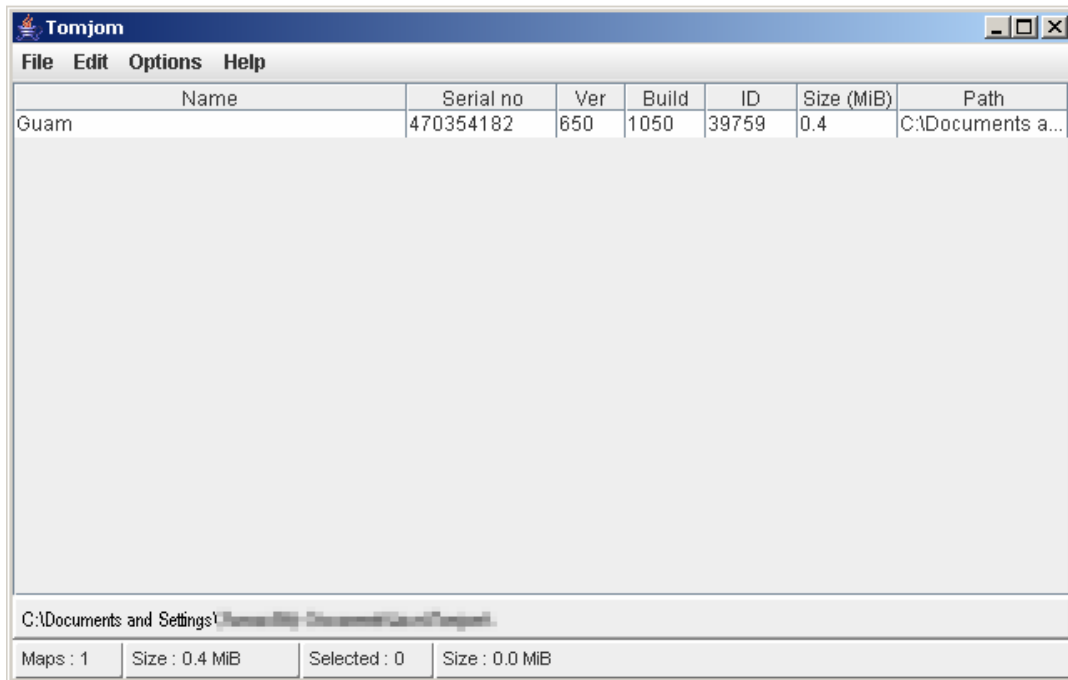


# TOMJOM v1.30

Tomjom is a freeware Tomtom map data reader and maintenance program for your PC or Mac. It scans directory structures and reports the information on all Tomtom maps it finds including name, version, build number, size and so on. The user can rename maps and copy all or part of map data in various formats to then paste it onto a text editor or spreadsheet.



## REQUIREMENTS

Tomjom needs:

- Java version 5.0 or higher running on any operating system supporting it such as Windows 98, Windows XP, FreeBSD, Linux, Mac OS and so on
- about 200 KB of disk space
- 2 MB of memory on the Java Virtual Machine

## INSTALLATION

No installation is needed. Just copy the files to the location of your choice. To uninstall, simply delete the files.

## RUNNING

To run Tomjom, you need to meet the above requirements. You can then run the program by simply double-clicking on the Tomjom.jar file.

Alternatively you may start up a DOS prompt, change directory to the Tomjom location and, assuming that the Java classpath is properly set up, type

```
java -jar Tomjom.jar
```

If neither of these methods works, check that you meet the requirements set above. If you don't, update your system and try again.

## OPERATION

### File → Set path

Select the top folder under which Tomjom will look for maps

### File → Scan maps

Start scanning the disk for maps. While the program is scanning, the path area at the bottom of Tomjom will turn into a pale shade of blue. The path area color will be restored at the end of the scanning. If the program is running in threaded mode (see **Options → Threaded mode**), it is possible to interrupt the scanning process by selecting the **File → Stop scan** menu. Information about the number of maps found and their total size appears at the status line.

Scanning C:\...

### File → Show map data

When one or more map files are selected on the main information table, this option will open up a new window with some additional information on the content of the selected maps. These data include the map serial number and version, the date of the map folder, as well as the size of the .dat files in the map folder. This option is useful for comparing the content of different versions of the same map (by checking the size change of the data files)

The screenshot shows the Tomjom application window with a menu bar (File, Edit, Options, Help) and a main table listing map folders. A 'Map files' dialog box is open, displaying detailed information for the selected 'North America' map.

Name	Serial no	Ver	Build	ID	Size (MiB)	Path
Australia						Australia
Benelux						Benelux
Canada-Alaska						Canada-Alaska
Canary_Islands						Canary_Islands
Central_Europe_plus_major_roads_of...						Central_Europe...
Deutschland						Deutschland
DE_AT_and_CH_plus_major_roads_of...						DE_AT_and_C...
France						France
Guam						Guam
Iberia						Iberia
Italia						Italia
North_America					32.6	North_America
PL-CZ-SK-HU						PL-CZ-SK-HU
PL_CZ_HU_SK_plus_major_roads_of...						PL_CZ_HU_SK...
Scandinavia						Scandinavia
United_Kingdom_and_Republic_of_Irel...						United_Kingdo...
USA_and_Canada						USA_and_Cana...
Western_Europe	825045440	650	1047	38915	916.7	Western_Europe

Map data	Serial no	Ver	Build	ID	Size (MiB)	Path
Serial no	1509524673			983805765		
Version	650.1052			650.1109		
Date	2006-02-13			2006-04-24		
-----						
cline.dat	657.2			518.2		
cnode.dat	194.1			176.7		
cname.dat	88.1			89.8		
faces.dat	106.1			67.6		
mapinfo.dat	20.4			20.0		
poi.dat	147.0			48.5		
trmccodes.dat	1.4			1.4		
-----						
.dat size (MiB)	1,214.3			922.5		

At the bottom of the Tomjom window, the status bar shows: Maps : 18 | Size : 5,520.4 MiB | Selected : 2 | Size : 2,155.1 MiB

**File → Exit**

Terminate the application

**Edit → Rename map**

This option allows you to rename a map to the name of your choice. Tomjom will rename the map folder and all the map references in the data files of the map. The map will now show under the new name in Tomtom Navigator next time it is run on the PDA. The method is safe to use as it detects existing map names and prevents duplicate name use or use of invalid characters.

Note: it is *not* possible to use spaces in the map name. If you do so, Tomjom will give you the option to amend the new map name before using it, or cancel renaming altogether.

**Edit → Clear map files**

Running this option on a map folder will *permanently delete* all data files which are user preferences and personal information, including home address, user points of interest, image files, text files and everything else. The map directory will be left with the minimum number of files required to use it. The deleted files *cannot* be restored – they are lost for good.

**Edit → Find**

Select maps based on version or build number. There exist options to search for a particular version/build number, or to search for all versions/build prior to or after the given number. The total number and size of the maps found will be displayed at the status line.

**Edit → Copy all**

Copy the information on all maps to the system clipboard. This text is created based on the copy format selected in **Options → Copy format**. You can then paste this information onto any text area or spreadsheet.

**Edit → Copy selected**

Copy the information on the selected maps to the system clipboard. This text is created based on the copy format selected in **Options → Copy format**. You can then paste this information onto any text area or spreadsheet.

**Edit → Invert selected**

Unmark the currently selected files and mark the currently unselected ones

**Options → Scan subdirs**

If not checked, Tomjom will only scan the current folder. If checked, all folders under the current one will be scanned too.

**Options → Scan postcodes**

This is an experimental option which may not work as expected. Tomjom will try to detect postcode files and report information on them along with the list of available maps.

**Options → Show relative path**

If not checked, Tomjom will show the full folder path on the path column. If checked, only the part of the path under the **File → Set path** path will be shown.

### Options → Copy format

Select how the information to be copied to the system clipboard will be formatted. For each map, **Newline** creates lines of text identical to those found in the map's .pna file.

**Tab separated** creates a single line of information per file with data items separated from each other by tabs. This content can be immediately pasted onto a spreadsheet. **Comma separated** uses commas instead. For the later two formats a header line is also created.

```

---- Australia (84.0 MiB) ----
ID=Australia.pna
960068272
650
build=1114
id=46059

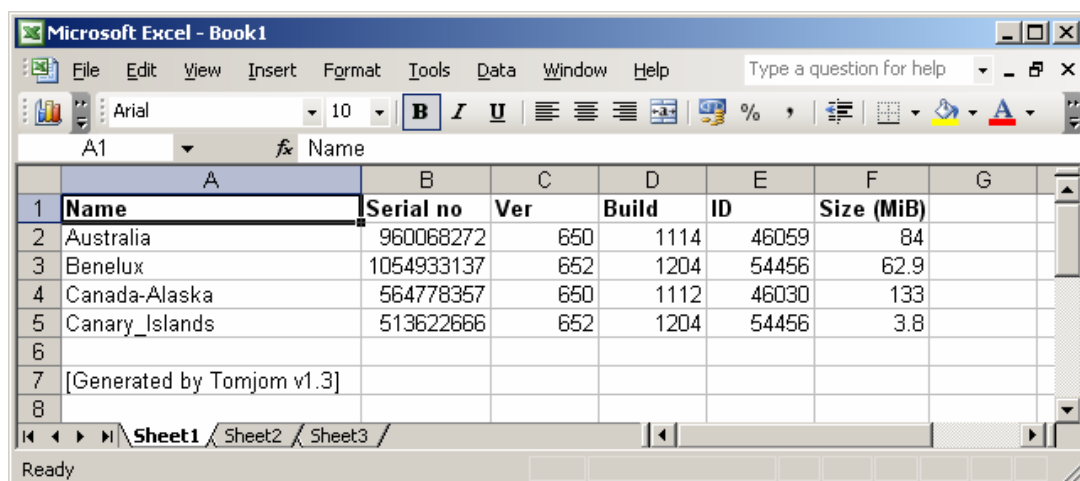
---- Benelux (62.9 MiB) ----
ID=Benelux.pna
1054933137
652
build=1204
id=54456

[Generated by Tomjom v1.3]

```

Name	Serial no	Ver	Build	ID	Size (MiB)
Australia	960068272	650	1114	46059	84.0
Benelux	1054933137	652	1204	54456	62.9
Canada-Alaska	564778357	650	1112	46030	133.0

[Generated by Tomjom v1.3]



### Options → Size units

Select MiB to show file sizes in mebibytes (1 MiB = 1,048,576 bytes). MB shows file sizes in megabytes (1 MB = 1,000,000 bytes)

### Options → Threaded mode

If selected, the program runs its scanning operation in the background. This means that you can interact with the program while it is scanning (you can stop it, resize it etc). It is possible however that this mode may cause the program to crash upon initialization of the

scanning function. If this occurs regularly, consider using the non-threaded mode where the program is guaranteed not to crash - however while it is scanning the folders it is not possible to interact with it (i.e. it cannot be stopped until scanning is over and the screen will not be refreshed if another application moves over it).

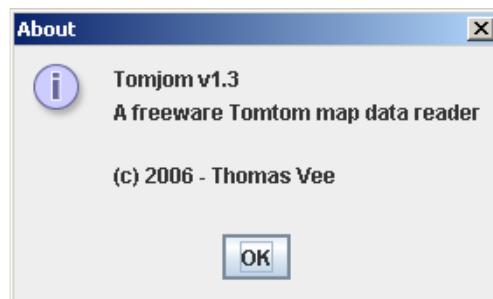
### Options → Save options on exit

If checked and Tomjom is stored on a writable folder, it will create a configuration file (`Tomjom.ini`) in that location. This file stores all the option preferences as set by the user at the time Tomjom terminates (including the map path and everything under the **Options** menu). Every time Tomjom starts it checks for the existence of this file. If found, the preferences are loaded.

To disable the loading of these preferences on start-up, simply delete `Tomjom.ini`.

### Help → About

Shows information about the program



## MAP INFORMATION TABLE

When map information is shown on the main screen table, the following operations are available:

- click on any column to sort the entries by that column in ascending mode. A second click will change sorting to descending mode
- click on any map row to mark that map. Its information will be added to the selected maps information on the status line. Use Ctrl+click to add or remove map rows to the current selection.

Maps : 18	Size : 5,520.4 MiB	Selected : 7	Size : 3,197.9 MiB
-----------	--------------------	--------------	--------------------

## KNOWN ISSUES

See discussion in **Options → Threaded** mode

## PROGRAM SUPPORT

I SHALL PROVIDE NO SUPPORT FOR YOUR PROGRAM EXECUTION PROBLEMS.

I wrote this program just for me. It is released to the public in the hope that other people will find its operation helpful. If you have problems running the program, I will not be able

to help because, to say it once again, I wrote this program just for me. If it runs on your machine, that's nice. If it doesn't, that's unfortunate. Sorry.

## LICENSE AGREEMENT

Tomjom is free to use for personal or commercial use. Tomjom may further be distributed by anyone provided that

- both `Tomjom.jar` and this PDF file are always distributed together
- neither of these two files is modified in any way
- no money is charged for providing the files
- the Tomjom files are provided as a separate stand-alone package and are not bundled together with any other software

Tomjom contains no malware, spy-, ad-, or virus code. Its author shall not be held responsible for any misuse of the program or any hardware/software failure that occurs during its use.

## VERSION HISTORY

Version 1.30 (2006-10-22)

- + added map rename function
- + added option to clear map files

Version 1.20 (2006-10-18)

- + added configuration file
- + added scanning for postcode files
- + added map file comparison screen
- + added file size units option (Mb or Mib)
- fixed: cannot detect maps of versions earlier than 6
- fixed: crash on **Scan maps** (also see **Options → Threaded mode**)

Version 1.01 (2006-10-03)

- + added show relative path option
- fixed: end of scan does not return to selected root path

Version 1.0 (2006-10-03)

- + buttons converted to menus
- + search function for version and build numbers
- + options menu, help menu
- + additional copy information formats (tab and comma separators)
- + copy information on selected maps from list only
- + status line with total map and selected map information
- + scan directories threaded mode available
- + sorting by column (ascending/descending)
- fixed: underscores not converted into spaces
- fixed: cancel set path resets path location

Version 0.9 (2006-10-01)  
+ first release

## **ABOUT**

Tomjom is © 2006 by Thomas V.